

Specification sheet LX 473

Parapet roof drainage systems

Series 89 RAINSTAR[®]

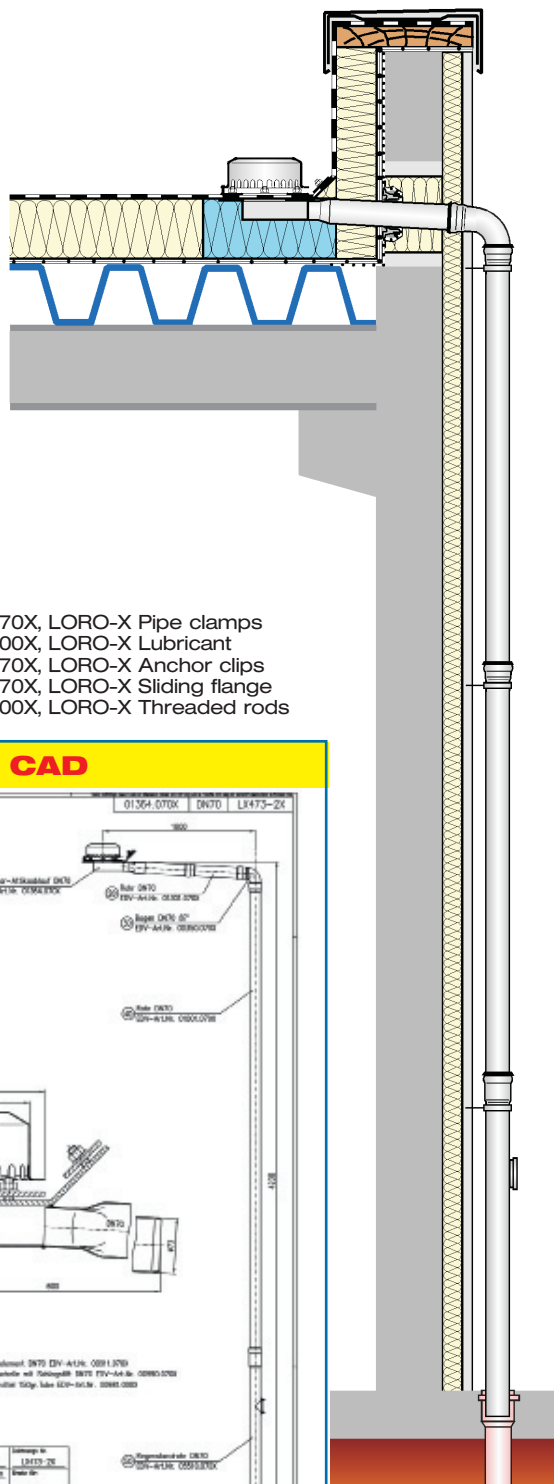
with roof penetration of 55 mm

Main drainage

Siphonic flow

Silent Power

Discharge rate:	15,6 l/sec
Water height:	55 mm
Roof penetration:	55 mm
Diameter:	DN 70
LX-Number:	LX 473
Weir height:	0 mm
Drain:	not ventilated
Downpipe:	not ventilated
Downpipes height:	min 4,2 m
Drainage:	in sewer
Flange form:	Clamping flange



LX 473 Piece list

1 x Art.-No. choose drain on page two!

1 x Art.-No. 01301.070X, LORO-X Pipe with one socket

1 x Art.-No. 00350.070X, LORO-X Bend

1 x Art.-No. 01001.070X, LORO-X Pipe with one socket

1 x Art.-No. 05510.070X, LORO-X Stand pipe

4 x Art.-No. 00911.070X, LORO-X Sealing elements

3 x Art.-No. 00973.070X, LORO-X Pipe clamps

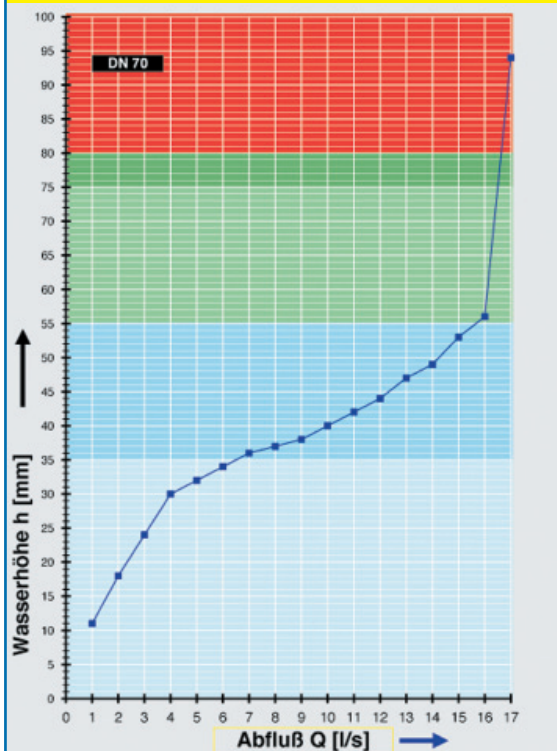
1 x Art.-No. 00986.000X, LORO-X Lubricant

3 x Art.-No. 00806.070X, LORO-X Anchor clips

1 x Art.-No. 13235.070X, LORO-X Sliding flange

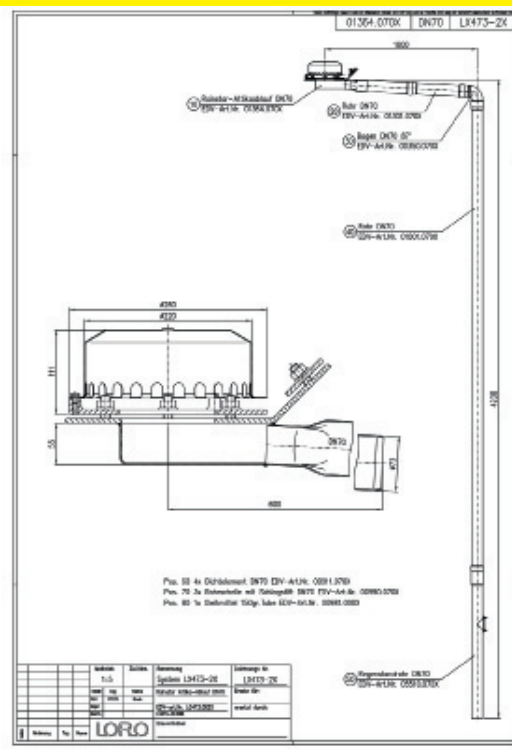
3 x Art.-No. 09603.200X, LORO-X Threaded rods

hQ - Head-Discharge curve



Systempower

CAD



Systemshape

Water height	mm	5	10	15	20	25	30	35	40	45	50	55	60	65	70	75
Discharge	l/sec			1,5	2,3	3,2	4,0	6,5	10,0	12,3	14,2	15,6				
				Silent		Silent Power										

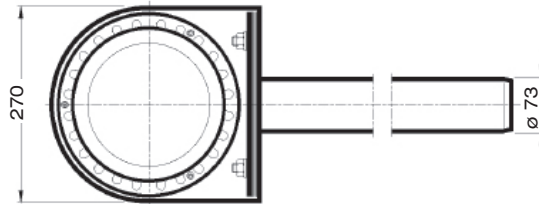
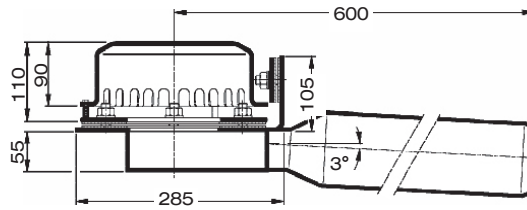
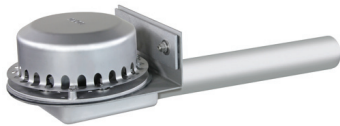
Choose drain for piece list on page one!

DN 70

LX473-1X

Drain Art.-No. 01366.070X
Weight: 8,3 kg

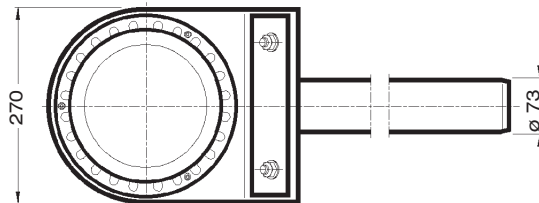
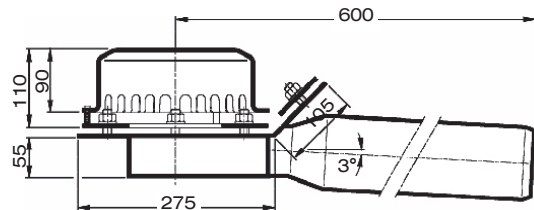
Series 89
with roof penetration of 55 mm
clamping flange 90°
for plastic roofing sheets



LX473-2X

Drain Art.-No. 01364.070X
Weight: 8,1 kg

Series 89
with roof penetration of 55 mm
clamping flange 45°
for bituminous roofing sheets



Please note:

For drainage systems with siphonic flow it is vital that only LORO-X pipes and fittings in the combination as indicated are used. Mixture or exchange of system parts may result in lower discharge capacities! The height of the downpipe must be a min. 4.2m for the indicated capacity to be obtained. If roof drain and downpipe are fitted by different crews, then do follow the system setup acc. to the LX-data sheet at www.loro-x.com

Heat tracing: Lorowerk recommends to check all drains and pipes with regard to their frost-sensibility. Where necessary, these parts should be upgraded with heat tracing.